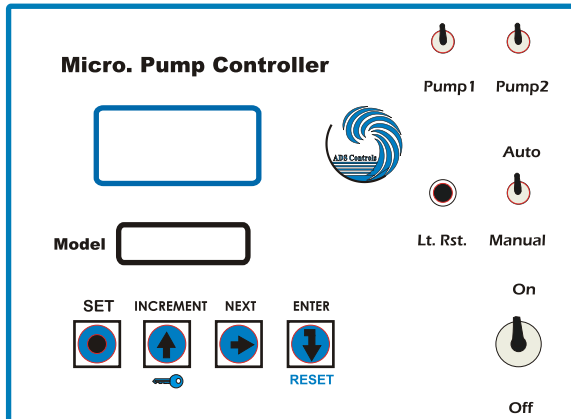




ADS CONTROLS (MUMBAI)

MICRO. PUMP CONTROLLER

ADS CONTROLS make MICRO PUMP CONTROLLER is designed with advance Technology of microprocessor based system.It gives solution and protection to your Pumping system.Built in micro controller monitors and controls current variation And safe guard your pump set at any time of critical running.



Features

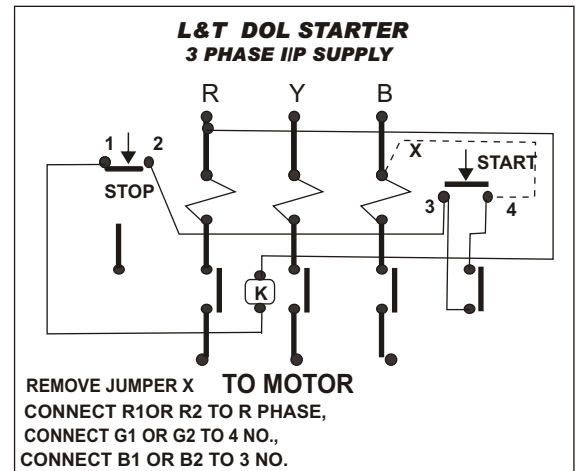
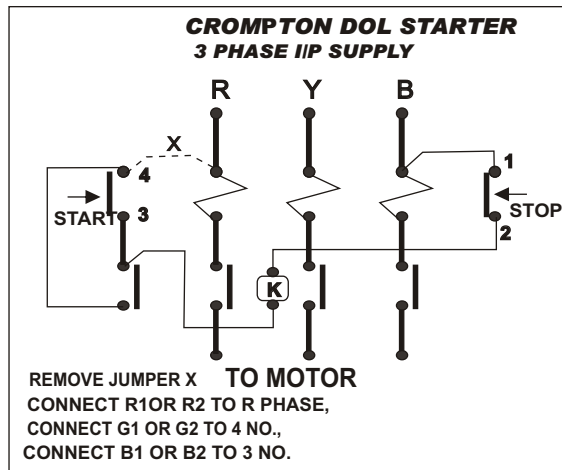
- * Built In Fully Automatic Pump controller.
- * Digital display for actual motor current , fault Condition ,Upper tank AND Lower Tank .
- * Password protection for current setting.
- * Automatic cyclic changeover of PUMP1 TO PUMP2
- * Pump1 / Pump2 / Cyclic mode selection Switches.
- * Auto / Manual, On / Off , LT.Rst. switches.
- * Under current,Over current,Short Circuit Protection.
- * Easy to installed.

APPLICATIONS

- * High rise Buildings.
- * Sewerage / Dewatering pumps.
- * Booster pumps.
- * Agriculture / Borewell pumps
- * Hospitals / Hotels / societies / Bungalows.

BENIFITS

- * Save electricity and water.
- * No manual opeartion save in operating cost.
- * Increases life of the motor.

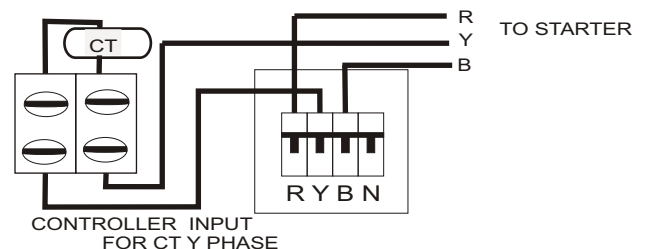


Micro pump controller connections 3 PHASE

R	B	R1	G1	B1	R2	G2	B2	HI	LO	CO	HI	LO
IIP 415V		Pump 1 Starter		Pump 2 Starter		LOWER TANK		UPPER TANK				

Micro pump controller connections 1 PHASE

PH	N	P1	P2	HI	LO	CO	HI	LO
IIP 230 V		Pump 1	Pump 2	LOWER TANK		UPPER TANK		



OPERATION MANUAL Model MPC

Connect panel cable input and out put as shown.

Keep pump1/ pump2 Switch to OFF

Keep Auto/Manual Switch to Manual.

Switch ON the supply display shows 0 0 0 , Wait for 10 sec , display shows previous set value for UC , OC check it and set as per pump hp .

Setting mode password 1 1 1 

Keep pressing button INCREMENT  for 4 sec . 

Display shows 0 0 0 press INCREMENT  and set 1 0 0 press next key  ,

Display shows 1 0 0 press INCREMENT  and set 1 1 0 press next key  ,

Display shows 1 1 0 press INCREMENT  and set 1 1 1 press enter key .

Display shows P A S press Enter key  Display shows 0 0 0

Under current setting (UC) LED indication. Up to 9 9.9 amp

press SET key U C press enter key  Display previ. UC reading 0 0 0

press INCREMENT key  & and NEXT key  to set define current and press ENTER 

Over current setting (OC) LED indication. up to 9 9.9 amp

Display shows O C Press ENTER key  Display previ. OC reading 0 0 0

press INCREMENT key  & and NEXT key  to set define current and press ENTER 

Note : After setting mode wait for 10 sec to start pumps.

Switches : On / Off switch for power , LT Rst. Switch lower tank reset.

Pump 1	Pump 2	Auto/manual	Operations
OFF	OFF	OFF	BOTH PUMP OFF
ON	OFF	ON	PUMP 1 AUTO
OFF	ON	ON	PUMP 2 AUTO
ON	ON	ON	CYCLIC CHANGEOVER



ADS CONTROLS
(MUMBAI)

Display indications : Upper tank Full (U T F), Lower Tank Empty (L T E), Over current (O C 1), (O C 2)
Under current (U C 1), (U C 2) Short Circuit (S C 1), (S C 2)

Note : If UC / OC / SC indication press ENTER or Power on/off switch.
After setting mode wait for 15 sec to start pumps.

Test report :

Model ; _____

Mechanical checks	
1. Transformer fitting	
4. Out put terminal	
5. Cpu connectors and wires	
6. Main card	
7. Relay card/ contactor	
8. Capacitors start/ run	
8. On/ off Switch	

Electrical checks	
1. Supply voltage transformer	
2. UC / OC Tripp	
3. ON Time / Off Time	
4. Current setting	
5. Sensor operation	

Tested by	
Sign & date	

Stamp and sign

Ads controls Mumbai